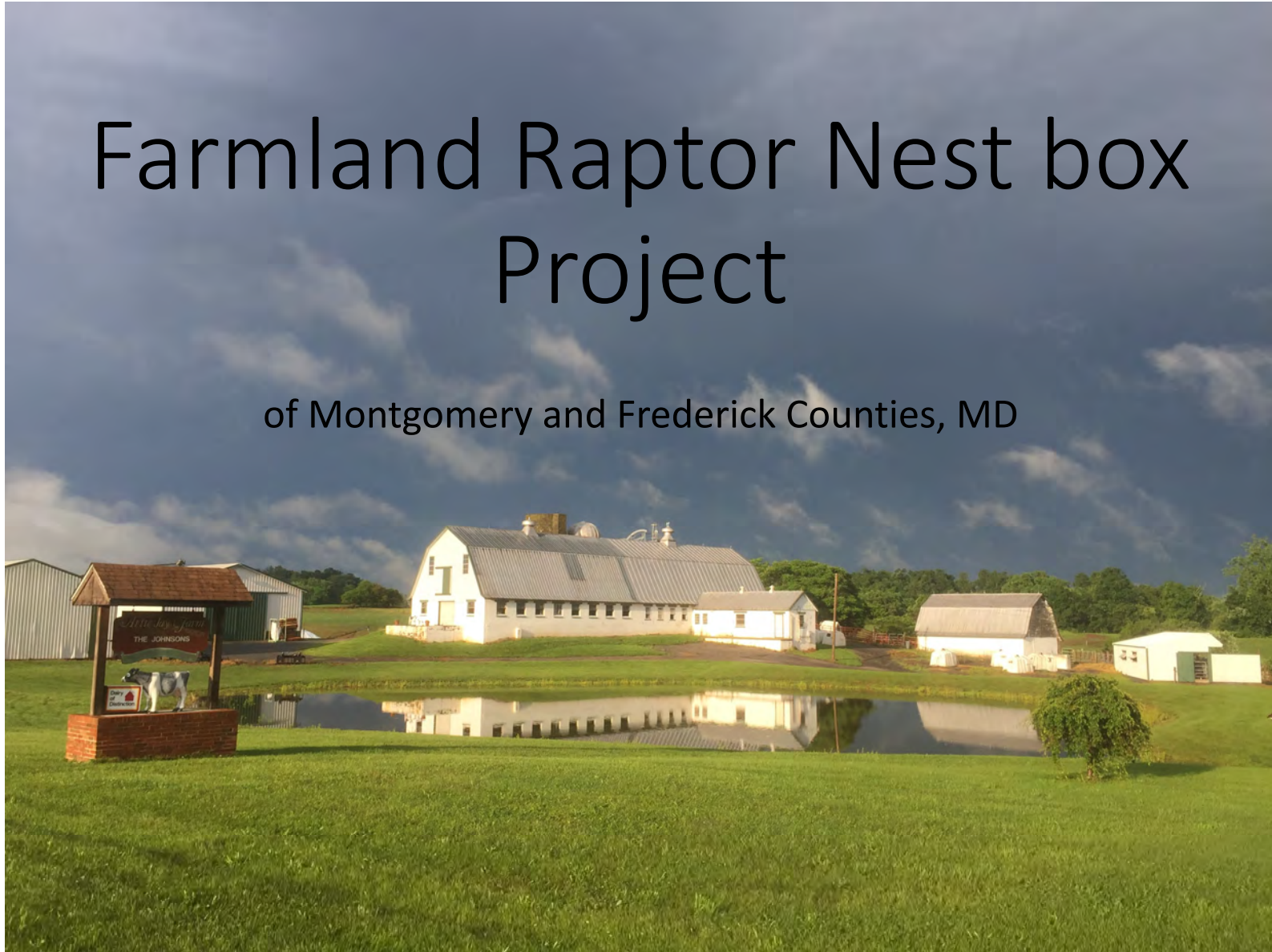
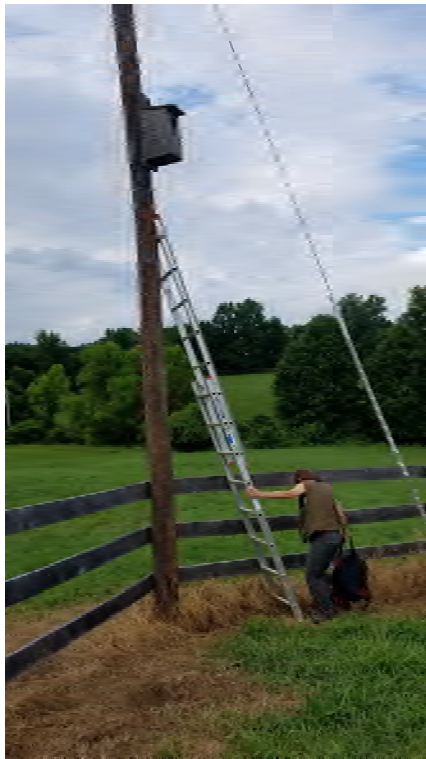


Farmland Raptor Nest box Project

of Montgomery and Frederick Counties, MD



Nest boxes installed at least 15 feet high on utility poles on farms in Feb. - April



American Kestrel Development

Hatchlings: Around Memorial Day



Young nestlings



American Kestrel Development

Hatchlings



Young nestlings



American Kestrel Development

Older nestlings



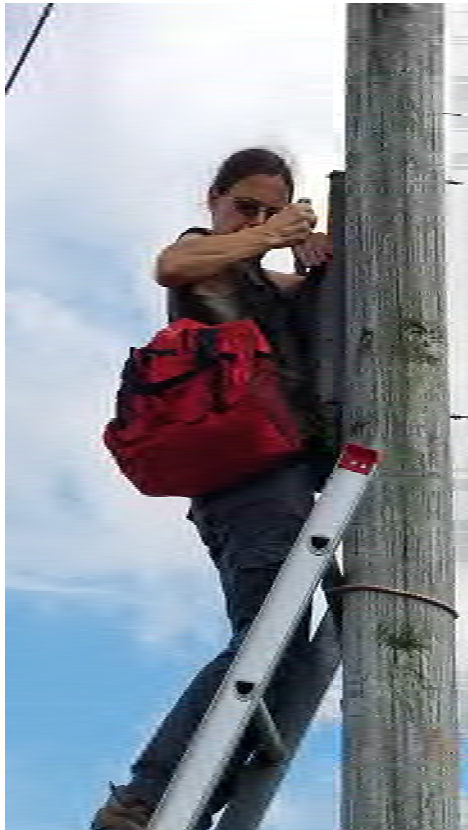
Older nestlings



Fledglings



Aging and Banding









American Kestrel Nest Box Summary 2011-18

Year	Total Boxes	Boxes Monitored	No. Occupied	Occupied But Failed	No. of Successful Nests	Number Banded	Percent Boxes Occuoid	Percent occupied that succeeded
2011	12	12	5	1	5	19 chicks, 2 Adult F	50	83
2012	14	13	7	0	7	23	50	100
2013	19	19	12	6	6	27	63	U
2014	21	21	16	4	10	36 chicks, 3 Adult F	76	63
2015	21	20	12	3	9	35	60	75
2016	21	20	12	3	9	35	60	75
2017	20	10	9	0	9	4 chicks	at least 45	100?
2018	19	17	13	0	12	33	at least 68	92

Barn Owl nest boxes installed in silos, 30 feet high in January or February



Monitor around Memorial Day



Climbing silos to inspect boxes



Barn Owl Development

Hatchling



Young nestlings



Barn Owl Development



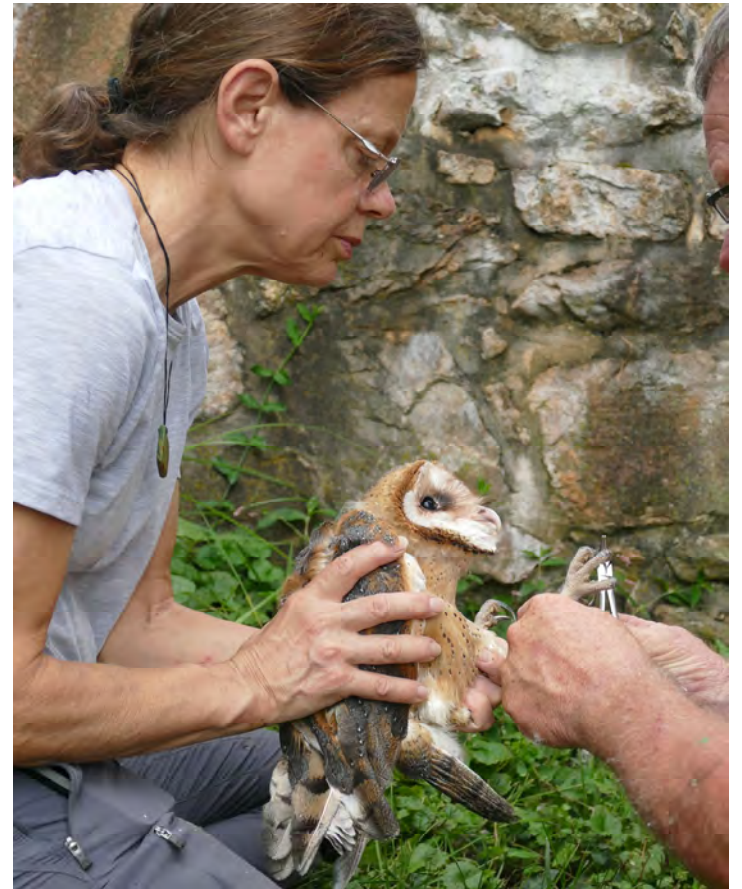
Barn Owl Development



Fledglings



Banding older nestlings



Barn Owl Nest Box Summary 2011-18

Total Boxes	Boxes Monitored	No. Occupied	Occupied But Failed	No. of Successful Nests	Number Banded	Percent Boxes Occuoiied	Percent occupied that succeeded
1	1	0	N/A	0	0	0	N/A
3	3	0	N/A	0	0	0	N/A
6	6	0	N/A	0	0	0	N/A
9	9	0	N/A	0	0	0	N/A
9	9	1 (4 chicks)	0	1	2	11	100
10	10	2 (8 chicks)	0	2	8 chicks	20	100
10	9	1	0	1	4 chicks	10	100
10	8	5	1	4	7 (of 13) chicks	50	80

Questions???

