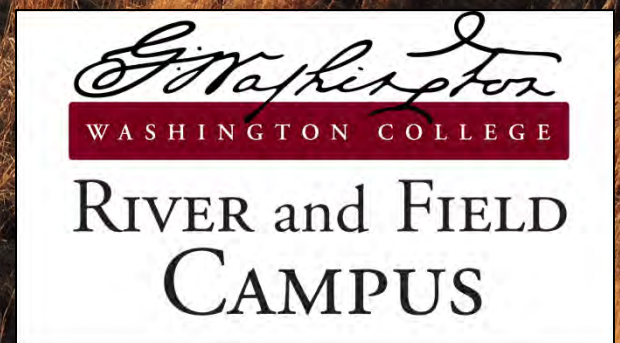
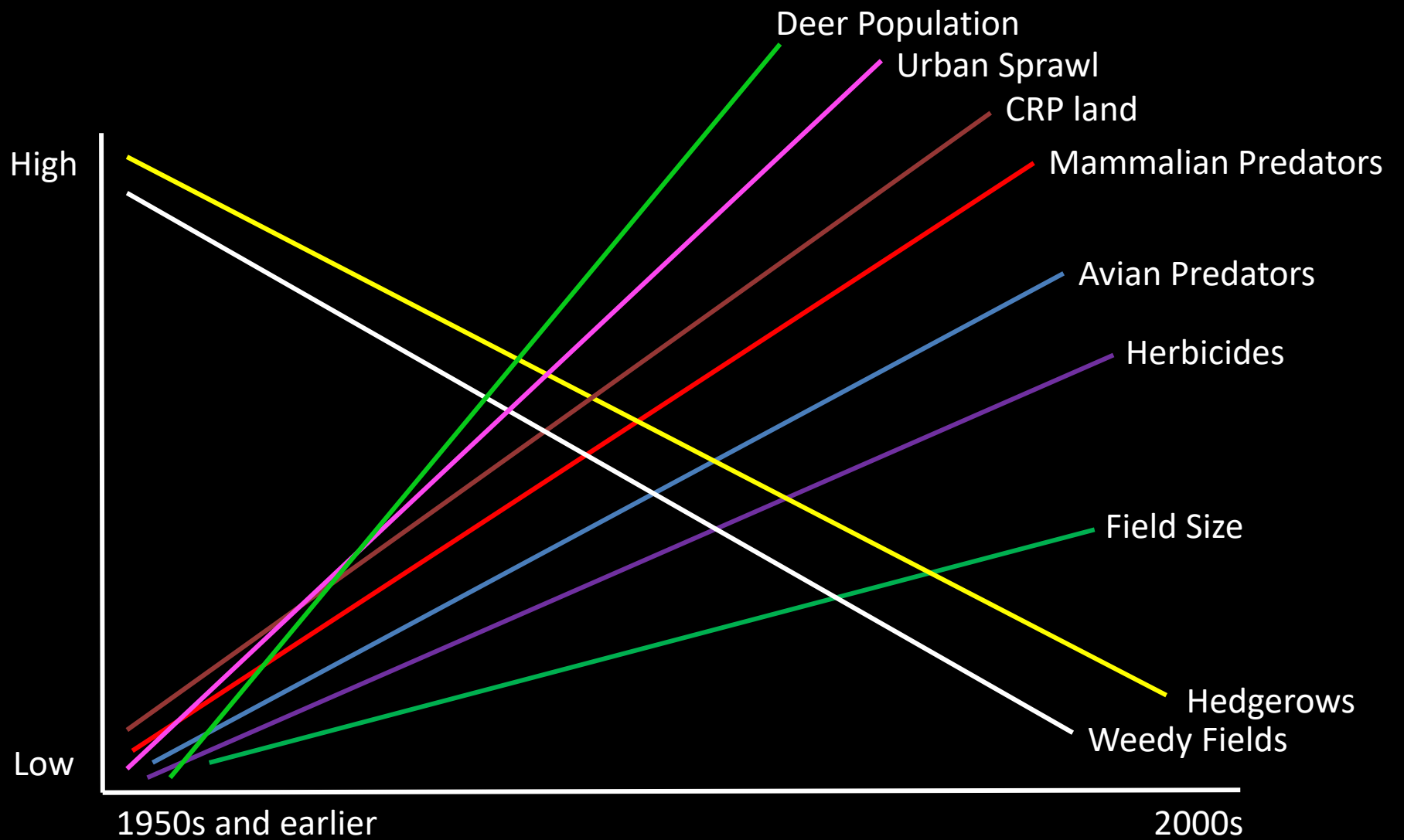


Natural Lands Project and Northern Bobwhite Conservation







7 - 2 - 37

AHW-9 -55

Road Top Rd

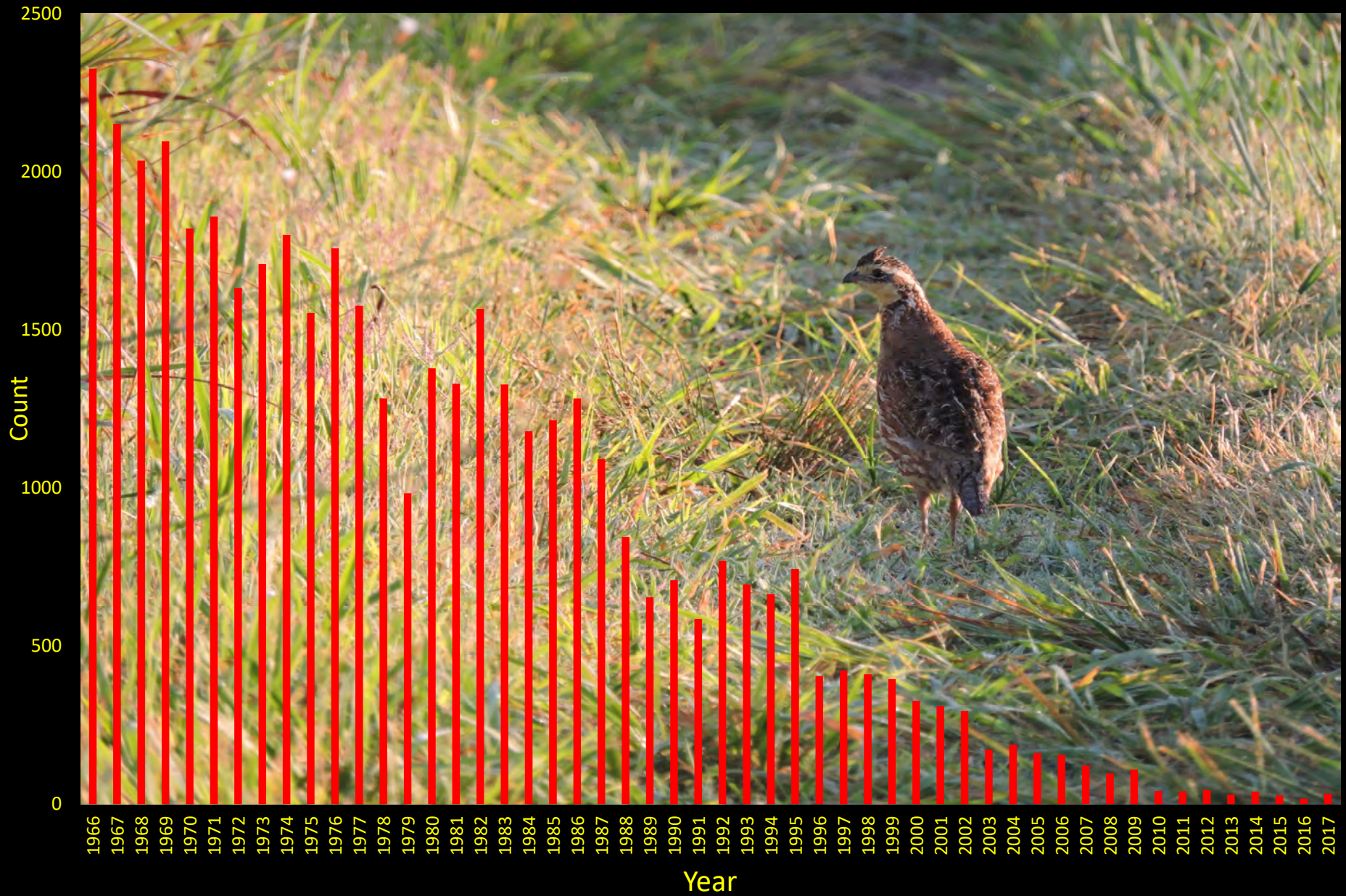
Kibler Rd

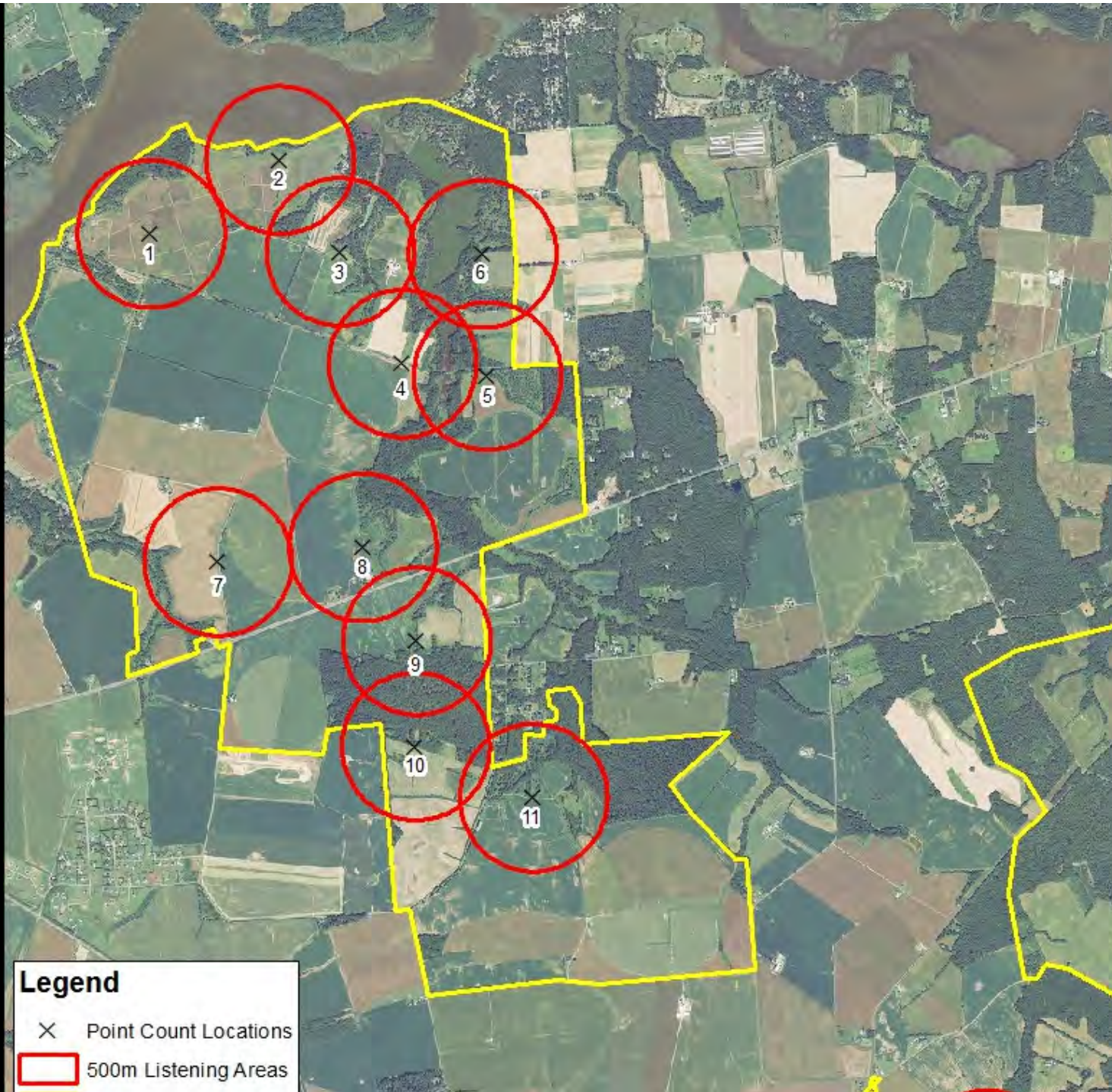




Maryland Breeding Bird Survey Data - 1966-2017

Northern Bobwhite





Quail Surveys



2009 – estimate of 400-800 birds
2010 – estimate of 10-20 birds

1-5% Survival rate

Summer Whistle Surveys

2010 - .07

2011 - .26

2012 - .48

2013 - .90

2014 - 1.39

2015 - 1.75

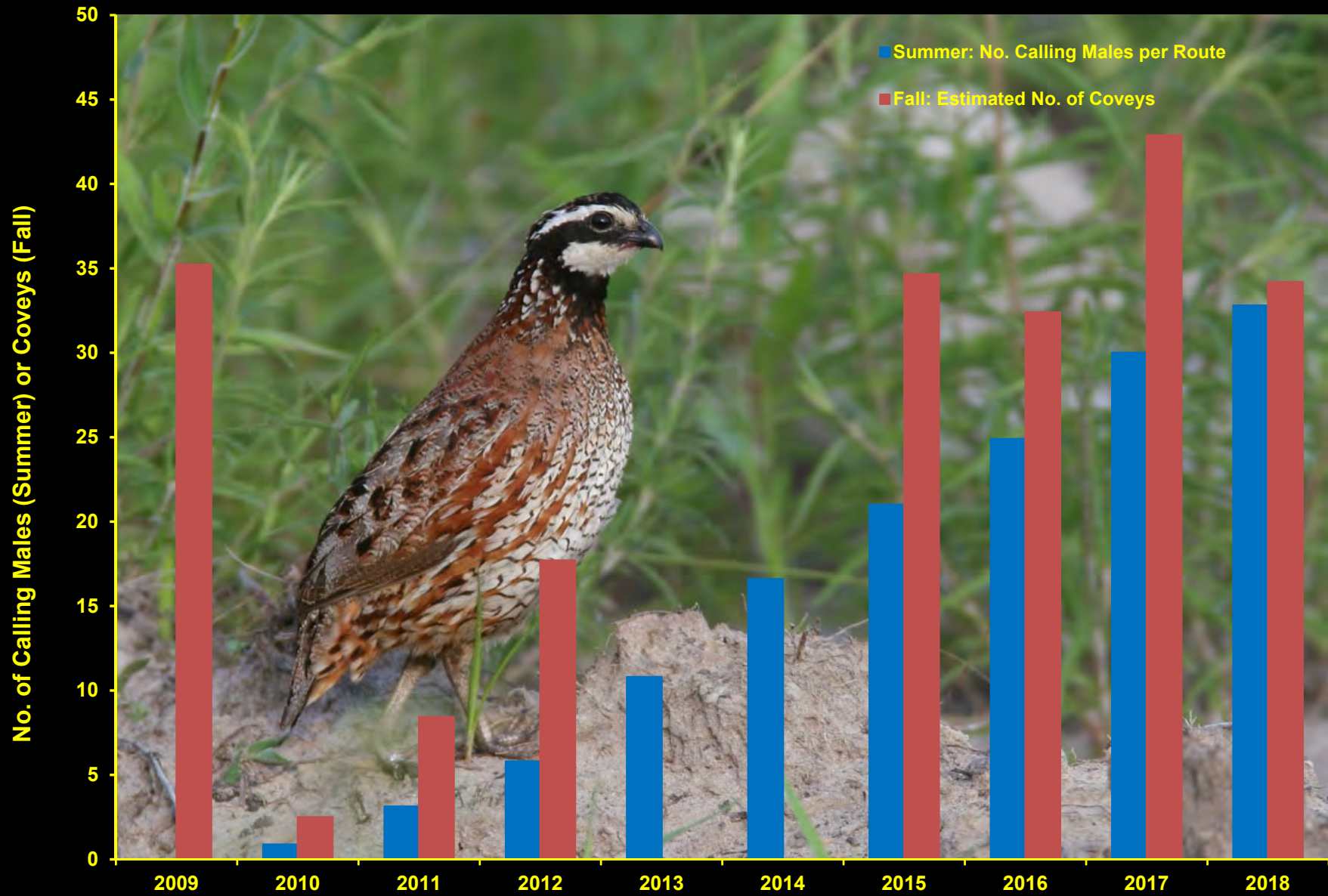
2016 - 2.07

2017 - 2.78

2018 - 3.08

The grasslands offer great brooding habitat but very poor overwintering habitat. Not enough woody vegetation escape cover.

River and Field Campus Northern Bobwhite Survey Data





Natural Lands Project

Balancing Natural Lands on Working Farms to
Improve Wildlife Habitat and Water Quality



Lynn Washington
WASHINGTON COLLEGE

Natural Lands Project: Partners



Natural Lands Project: Wildlife for Water Quality

- 2015 – 2018
- 345 acres of upland native warm season grass habitat
- 27 acres of wetlands





Natural Lands Project: Wildlife for Water Quality

- 2018 – 2020
- 285 acres of upland native warm season grass habitat
- 16 acres of wetlands



NFWF



Chesapeake Bay Stewardship Fund



Chesapeake Bay Program
Science. Restoration. Partnership.

Natural Lands Project: Target

Enrollment of marginal cropland or fallow land not enrolled in a conservation practice

Grassland habitat

- 40 acres or more
- Proximity
- Riparian waterways
- Grass buffers equal to or greater than 100ft

Wetlands

- 5-10 acres
- Unproductive Hydric soils (wetland restoration)









Natural Lands Project: Water Quality Benefits

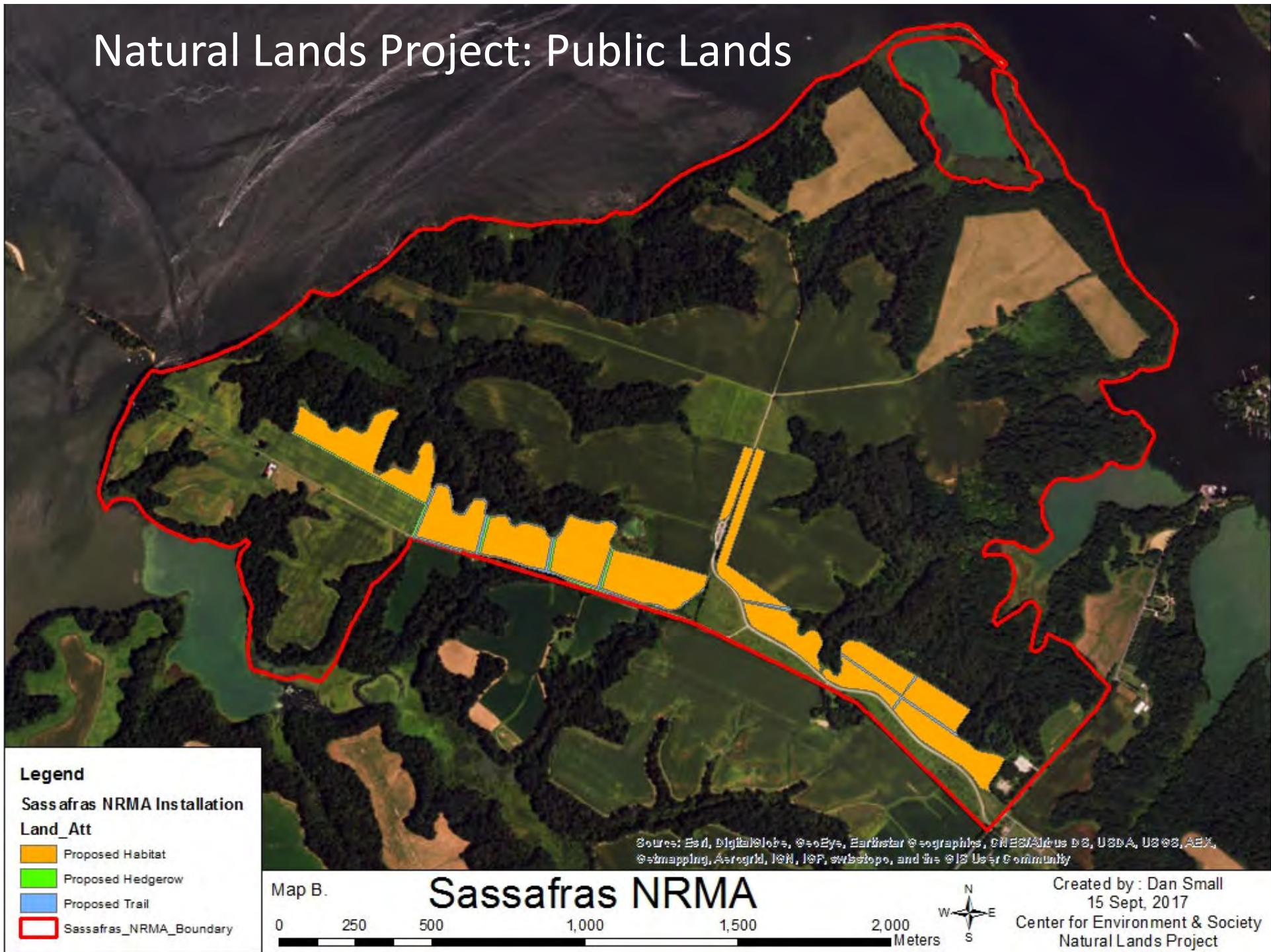
N – 1,866.30 lbs reduced

P – 127.04 lbs reduced

Sediment – 95,370.43 lbs reduced



Natural Lands Project: Public Lands





Source: Esri, DigitalGlobe, GeoEye, Earthstar Geographics, CNES/Airbus DS, USDA, USGS, AeroGRID, IGN, and the GIS User Community

Sassafras NRMA

Sassafras NRMA

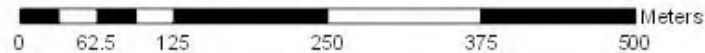
Sassafras_NRMA_Habitat_Features

Habitat

- Ag Land 29.5 ac
- Habitat 47.6 ac

Existing NLP Habitat

- Hedgerow
- Trail
- Wildflower Meadow



New habitat will be a mix of trees, shrubs and grassland habitat. Exact ratio of habitat to be determined.

A photograph of two quail birds standing in a field of tall, green grass. The birds have brown and white mottled feathers and a distinctive white stripe on their heads. They are facing left. The background is a dense field of grass.

dsmall2@washcoll.edu

www.washcoll.edu/centers/ces/crfrs/

[www.Facebook/CRFRC](https://www.facebook.com/CRFRC)